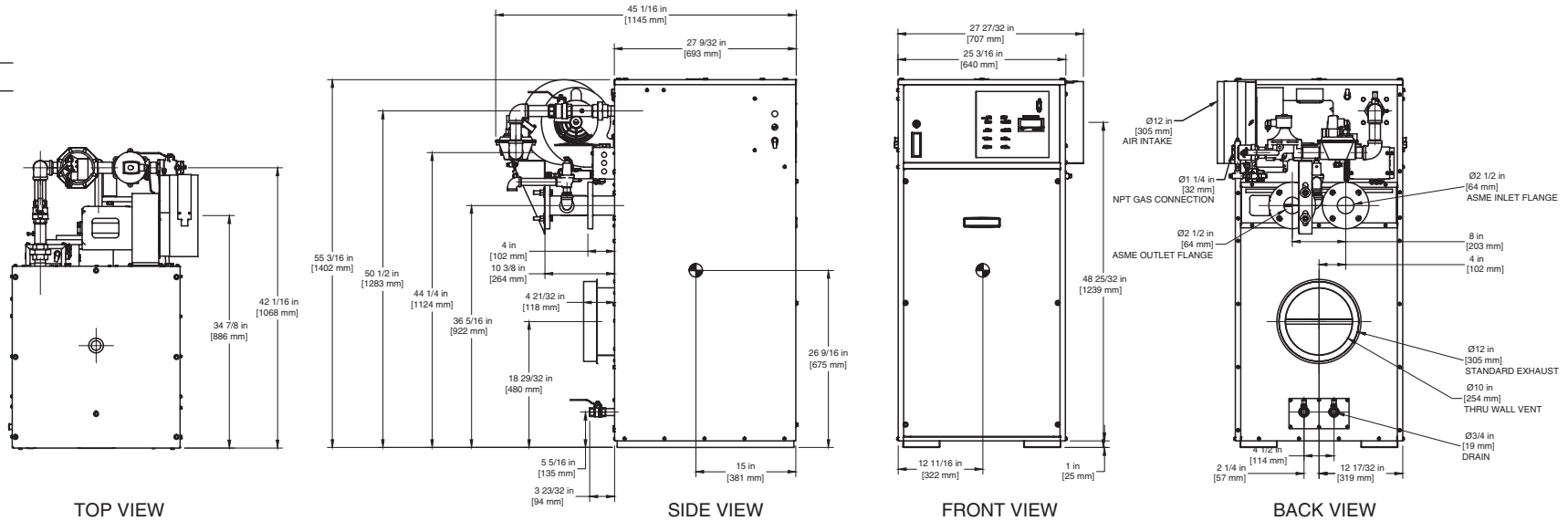


INDOOR UNIT

RSUB-68 REV D

CODE OPTIONS

CSD-1 Manual Reset LWCO



Notes:

1. Dimensions are approximate and should not be used to "rough-in" equipment.
2. Dimensions are subject to change without notice.

BOILER CERTIFIED RATINGS & CAPACITIES

| | | | |
|--------------------------------|------------------------|-----------------------------------|--------------------|
| Fuel Type | Natural/Propane Gas | Boiler FLA | 9.9* |
| Input BTU/hr. | 1,500,000 / 440 kW | Min. Gas Pressure Required | 5" W.C.** |
| Output BTU/hr. | 1,275,000 / 374 kW | Max. Gas Pressure Allowed | 14" W.C. |
| Electrical Requirements | 120 VAC / 1 ph / 60 hz | Operating Weight | 732 lbs. / 332 kg. |

BOILER TEMPERATURE RISE / PRESSURE DROP

| 20°F / 11.1°C | | | | 25°F / 13.9°C | | | | 30°F / 16.7°C | | | | 35°F / 19.4°C | | | |
|---------------|-----|---------------|------|---------------|-----|---------------|-----|---------------|-----|---------------|-----|---------------|-----|---------------|-----|
| Flow Rate | | Pressure Drop | | Flow Rate | | Pressure Drop | | Flow Rate | | Pressure Drop | | Flow Rate | | Pressure Drop | |
| GPM | L/s | Ft | kPa | GPM | L/s | Ft | kPa | GPM | L/s | Ft | kPa | GPM | L/s | Ft | kPa |
| 127.5 | 8.0 | 3.57 | 10.5 | 102.0 | 6.4 | 2.36 | 7.0 | 85.0 | 5.4 | 1.70 | 5.0 | 72.9 | 4.6 | 1.30 | 3.7 |

BOILER / WATER HEATER TRIM & CONTROLS

| | | | |
|----------------------------------|--------------------|--------------------------|---------------------------|
| Main Gas Valve | V4944B | Main Ball Valve | 1 1/4" |
| Firing Valve | 1 1/4" | Pilot Regulator | White-Rodgers 25M |
| Safety Valve | ASCO L8214G 1 1/4" | Air Switch | HUBA |
| Ignition Control | Honeywell RM7897C | Blower Motor | Fasco 1/2 hp - FLA 8.2 |
| Operating Control (FB/FW) | Jumo | Relief Valve - FB | 1" x 1 1/4" set @ 50 psi |
| High Limit | Honeywell L4008E | Relief Valve - FW | 3/4" x 3/4" set @ 125 psi |
| | | Flow Switch | TACO |

WATER HEATER HOURLY RECOVERY CAPACITY (GPH & LPH)

| 40°F | 22°C | 60°F | 33°C | 80°F | 44°C | 100°F | 56°C | 120°F | 67°C | 140°F | 78°C |
|------|-------|------|------|------|------|-------|------|-------|------|-------|------|
| 3741 | 14141 | 2494 | 9427 | 1870 | 7070 | 1496 | 5656 | 1247 | 4714 | 1069 | 4040 |

Futera II 1500 model water heater not available for sale in Canada due to NRCAN Regulations.

A.S.M.E.

| | | | |
|---------------------------------|-------------------------------|--------------------|-----------------------|
| ASME Sect IV Htg Surface | 161.16 Sq. Ft. / 14.97 Sq. M. | Design Data | Max. 160 psig & 250°F |
| Water Volume | 5.0 gal / 18.9 Liters | | |

* Add circulator amps.

** For incoming gas pressures lower than 5" W.C. natural or 11" W.C. propane, consult factory.

REP FIRM _____

SUBMITTED BY _____

JOB NAME _____

ARCHITECT _____

ENGINEER _____

CONTRACTOR _____

DATE _____

FUTERA II 1500

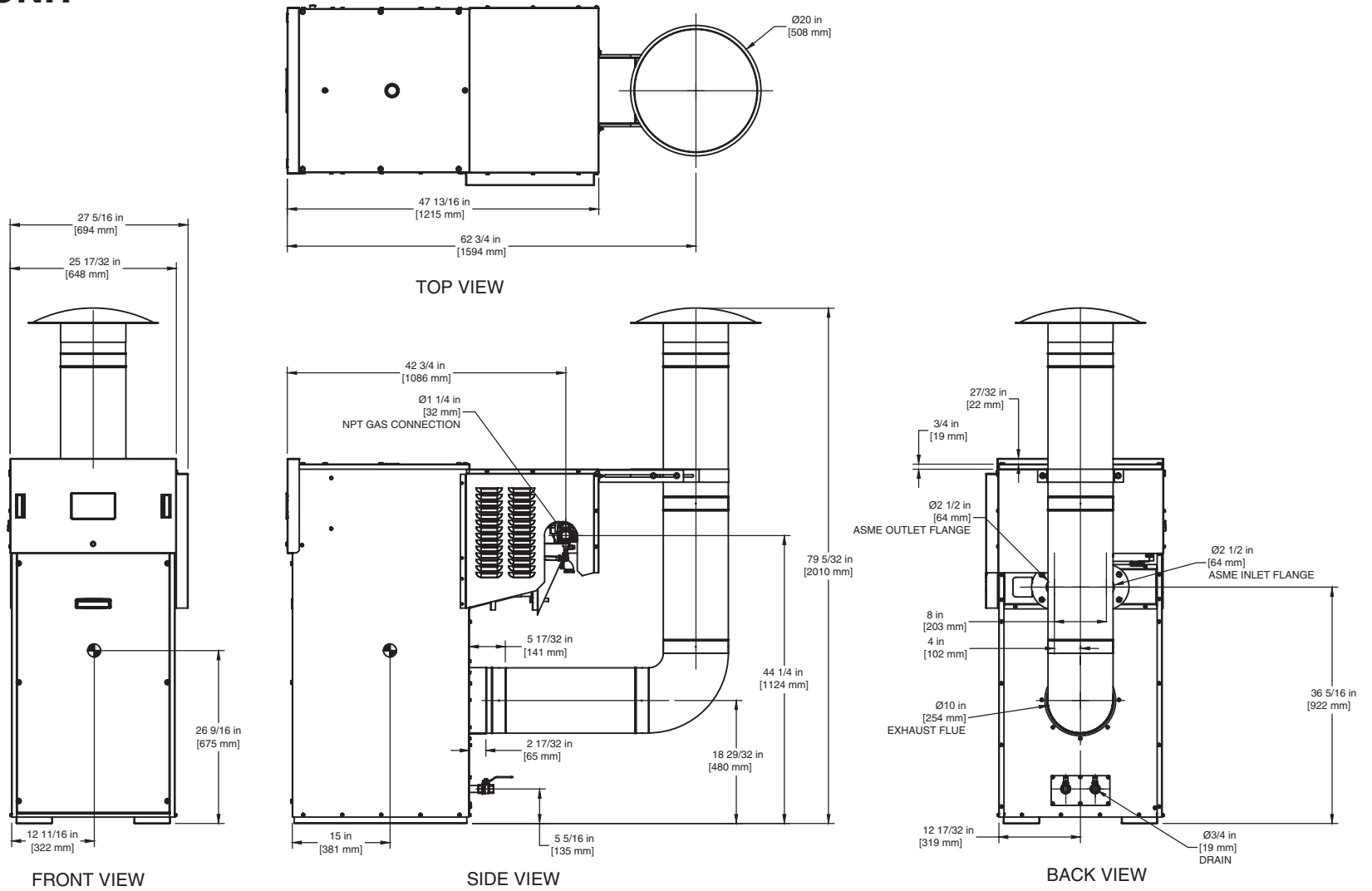
Category I or Category III Appliance

(see Installation and Operation Manual for venting information)



A Division of Mestek, Inc.
Westfield, MA 01085
(413) 568-9571

OUTDOOR UNIT



FUTERA II 1500

- Notes:**
1. Dimensions are approximate and should not be used to "rough-in" equipment.
 2. Dimensions are subject to change without notice.